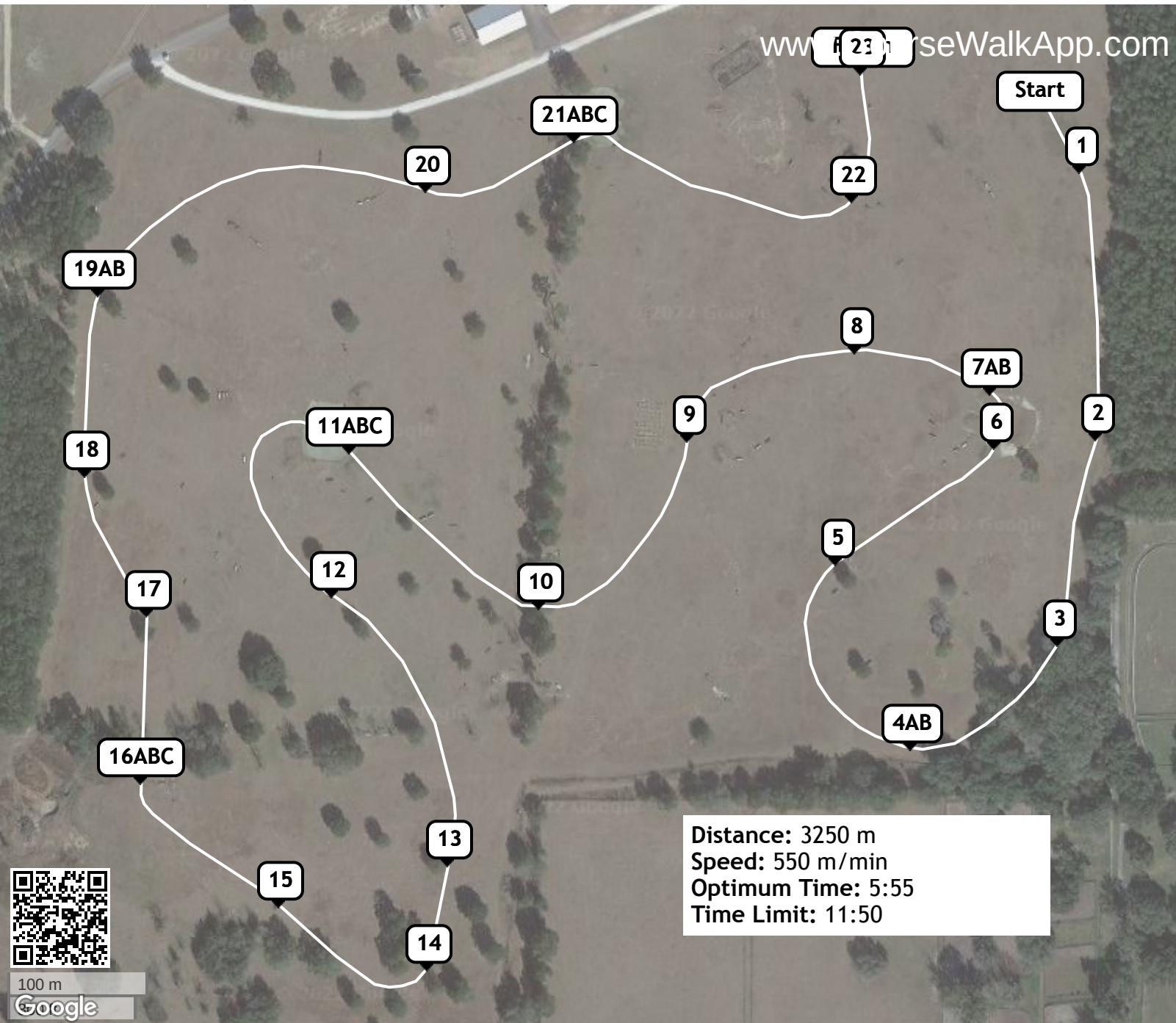


Ocala Fall HT (ID: 31818) - Intermediate



www.horseWalkApp.com

- 1 Log Box
- 2 Blue Roll
- 3 Step Table
- 4AB Cabins
- 5 Mulch Table
- 6 Post and Rail
- 7AB Quarry
- 8 Dutch Barn
- 9 Sheep Shed
- 10 Ditch Brush
- 11ABC FHP Springs
- 12 Arch Table
- 13 Red Aqueduct
- 14 Trakehner
- 15 Oxer
- 16ABC Coffin
- 17 Florida License Plate
- 18 Boat House
- 19AB MIM Table - Corner
- 20 Ramp
- 21ABC FHP Splash
- 22 Red Roll
- 23 Horse Shoe

Distance: 3250 m
Speed: 550 m/min
Optimum Time: 5:55
Time Limit: 11:50



100 m
Google